

fronto

tempo

os propres au

os mala

ou zygomati

omopl

humé

# SQUELETTE (v)

frontal

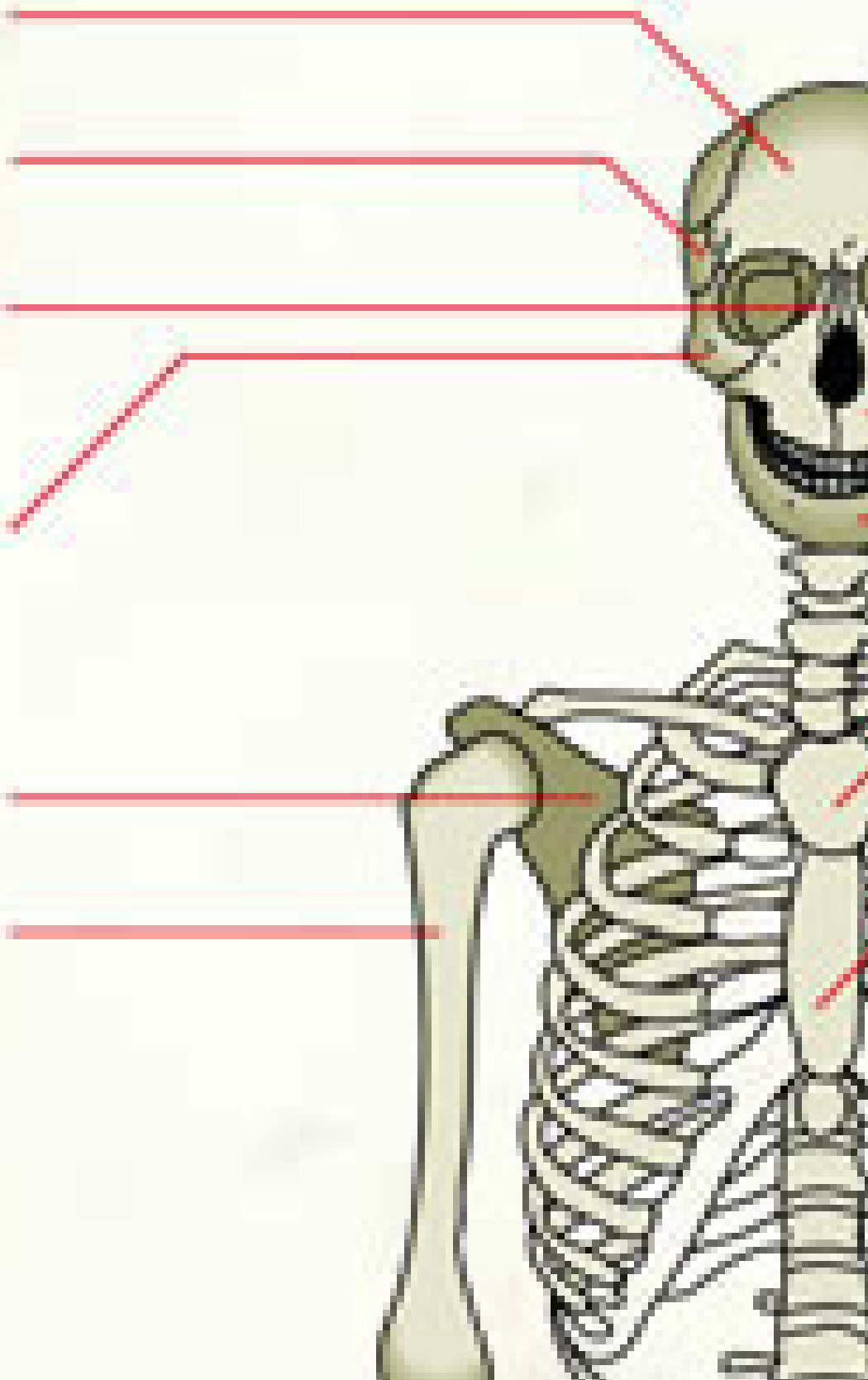
temporal

du nez

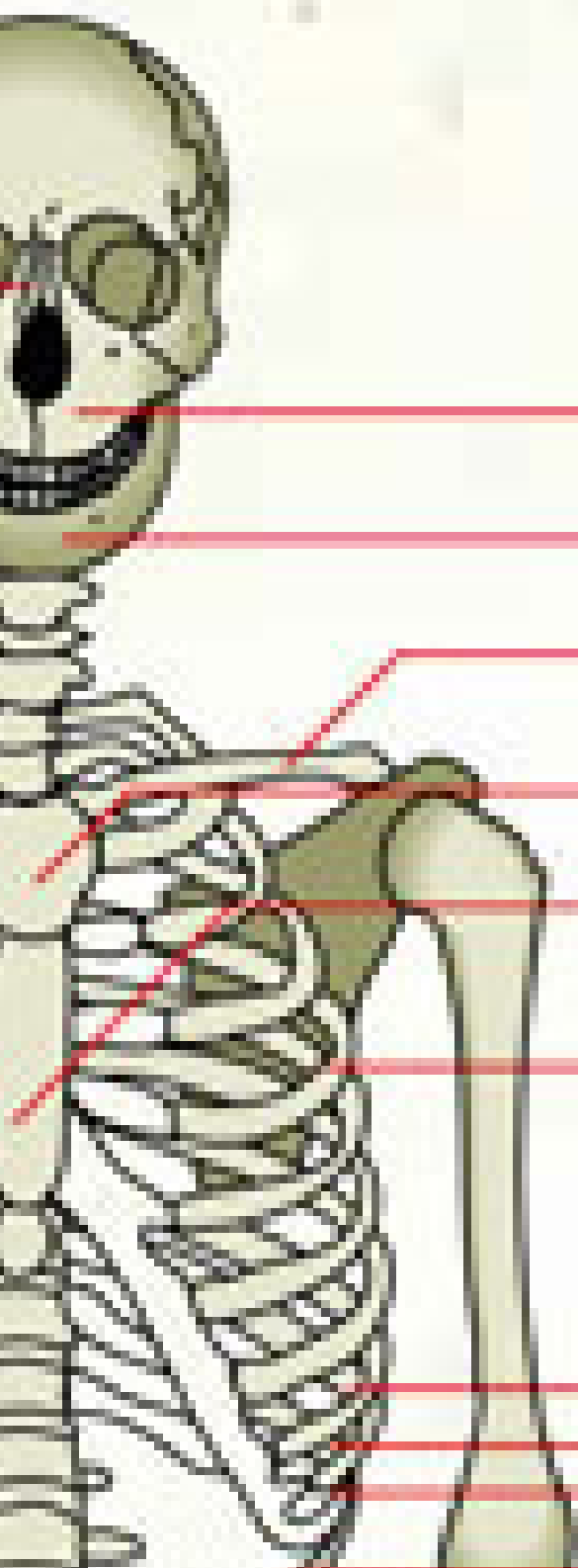
maxillaire  
supérieure

scapula

humerus



vue antérieure)



- maxillaire supérieur
- maxillaire inférieur
- clavicule
- manubrium
- sternum
- côtes (1 à 7)

- fausses côtes (8, 9, 10)
- côtes flottantes (11, 12)

cub

rad

carp

métaca

phalan

phalang

phalange

ulna

radius

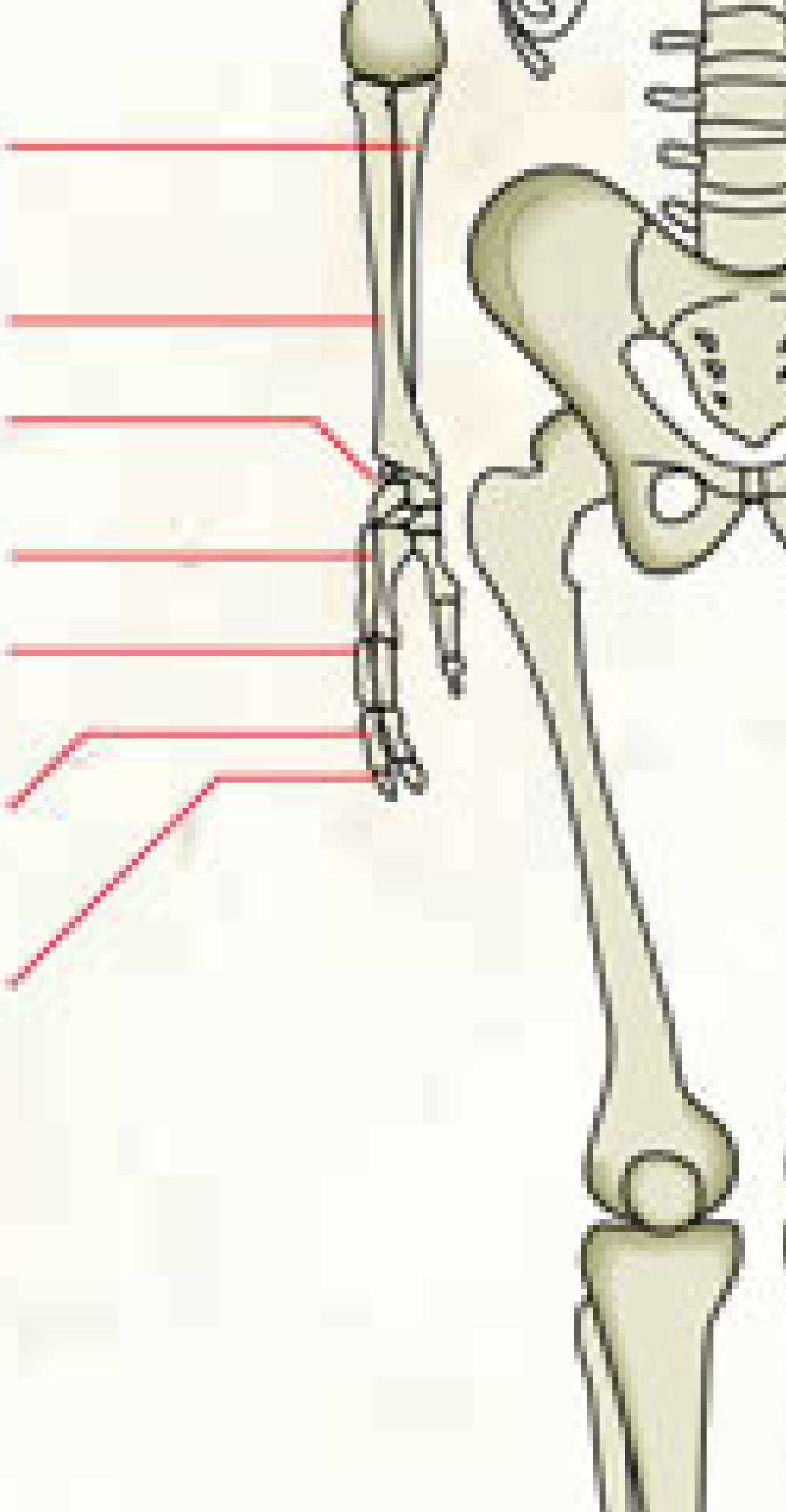
carpals

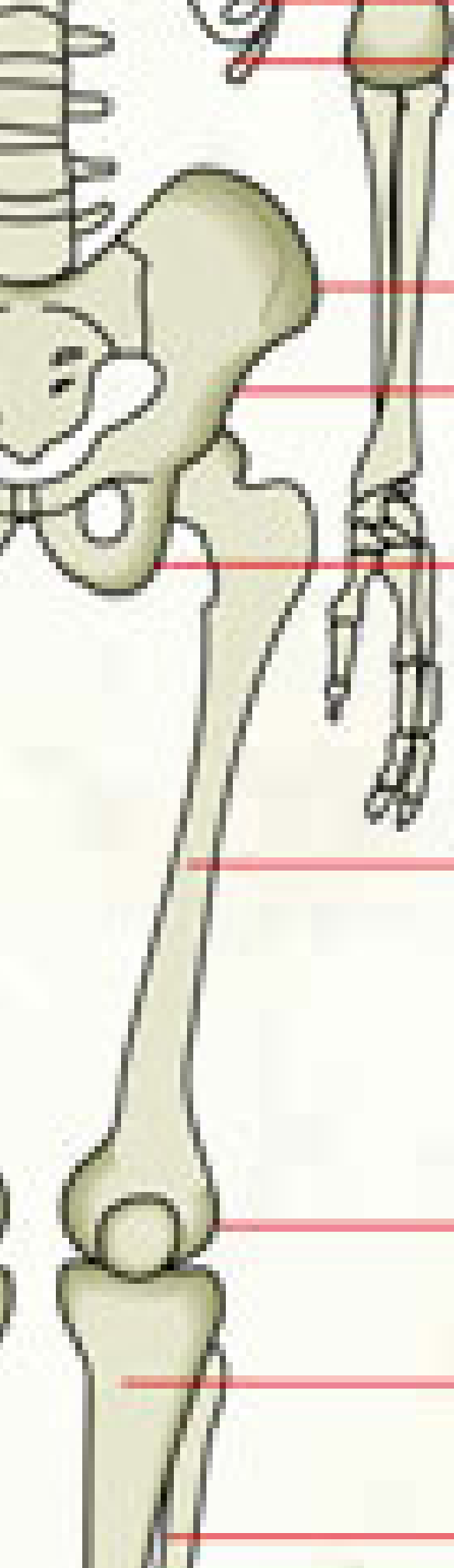
trapezium

trapezoid

metacarpals

phalanges







côtes flottantes (11, 12)

os iliaque

sacrum

ischion

fémur

rotule

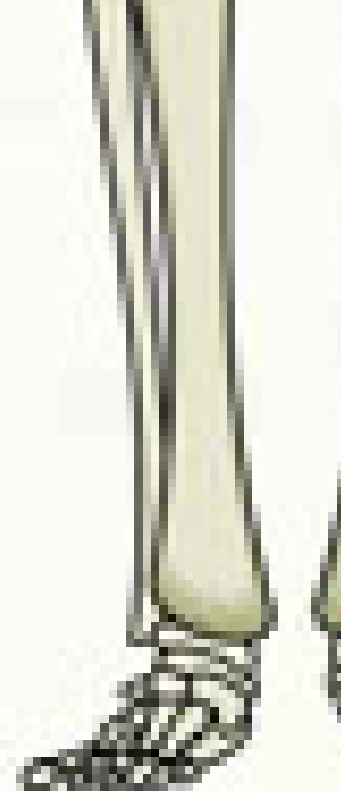
tibia

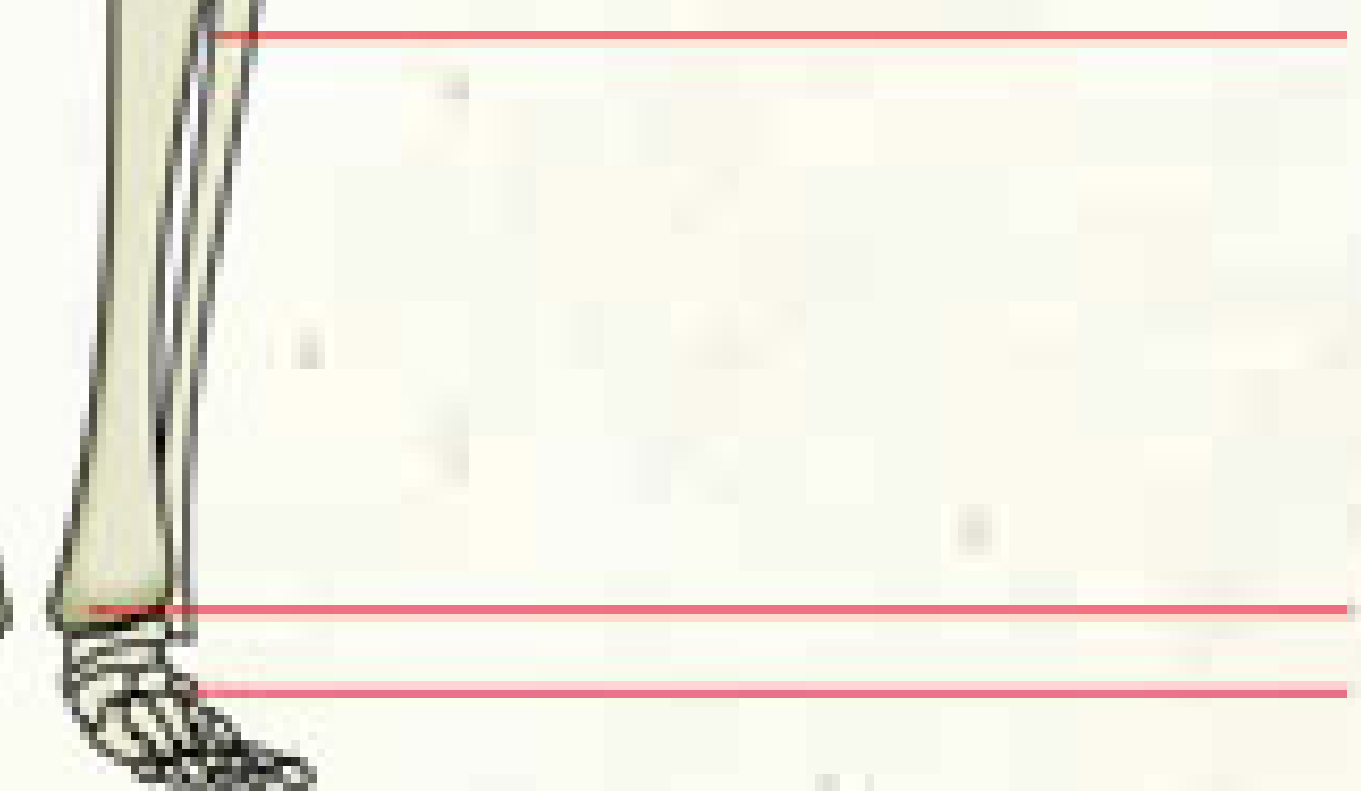
péroné



[www.infovisual.com](http://www.infovisual.com)

al.info





— péroné

— tarse

— métatarse